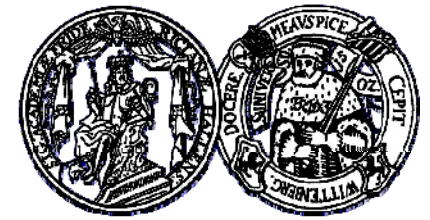




iDiv

German Centre for
Integrative Biodiversity Research (iDiv)
Halle-Jena-Leipzig



sPlot –the Global **Vegetation-Plot Database**

Helge Bruelheide ^(1,2), Jürgen Dengler ^(2,3), Oliver Purschke ^(2,4), Milan Chytrý ⁽⁵⁾, Florian Jansen ⁽⁶⁾, Stephan Hennekens ⁽⁷⁾, Ute Jandt ^(1,2), Borja Jiménez-Alfaro ⁽⁵⁾, Jens Kattge ^(2,8), Jonathan Lenoir ⁽⁹⁾, Valério D. Pillar ⁽¹⁰⁾, Brody Sandel ⁽¹¹⁾, Marten Winter ⁽²⁾
& the sPlot Consortium

- (1) Geobotany and Botanical Garden, Institute of Biology, Martin Luther University Halle Wittenberg, Am Kirchtor 1, 06108 Halle (Saale), Germany
- (2) German Centre for Integrative Biodiversity Research (iDiv) Halle-Jena-Leipzig, Deutscher Platz 5e, 04103 Leipzig, Germany
- (3) Plant Ecology, Bayreuth Center of Ecology and Environmental Research (BayCEER), University of Bayreuth, Universitätsstr. 30, 95447 Bayreuth, Germany
- (4) Department of Computer Science, Institute of Informatics, Martin Luther University Halle Wittenberg, Von-Seckendorff-Platz 1, 06120 Halle (Saale), Germany
- (5) Department of Botany and Zoology, Masaryk University, Kotlářská 2, 611 37 Brno, Czech Republic
- (6) Institute of Botany and Landscape Ecology, University of Greifswald, Soldmannstr. 15, 17487 Greifswald, Germany
- (7) Alterra, Wageningen UR, Droevendaalsesteeg 3, 6708 PB Wageningen, Netherlands
- (8) Max Planck Institute for Biogeochemistry, Hans-Knöll-Str. 10, 07745 Jena, Germany
- (9) Université de Picardie Jules Verne, Amiens, France
- (10) Department of Ecology, Universidade Federal do Rio Grande do Sul, Porto Alegre, RS, 91501-970, Brazil
- (11) Department of Bioscience, Aarhus University, Ny Munkegade 114, 8000 Aarhus C, Denmark



sDiv

iDiv is a research centre of the

DFG Deutsche
Forschungsgemeinschaft

www.idiv.de

Vegetation plots (relevés)

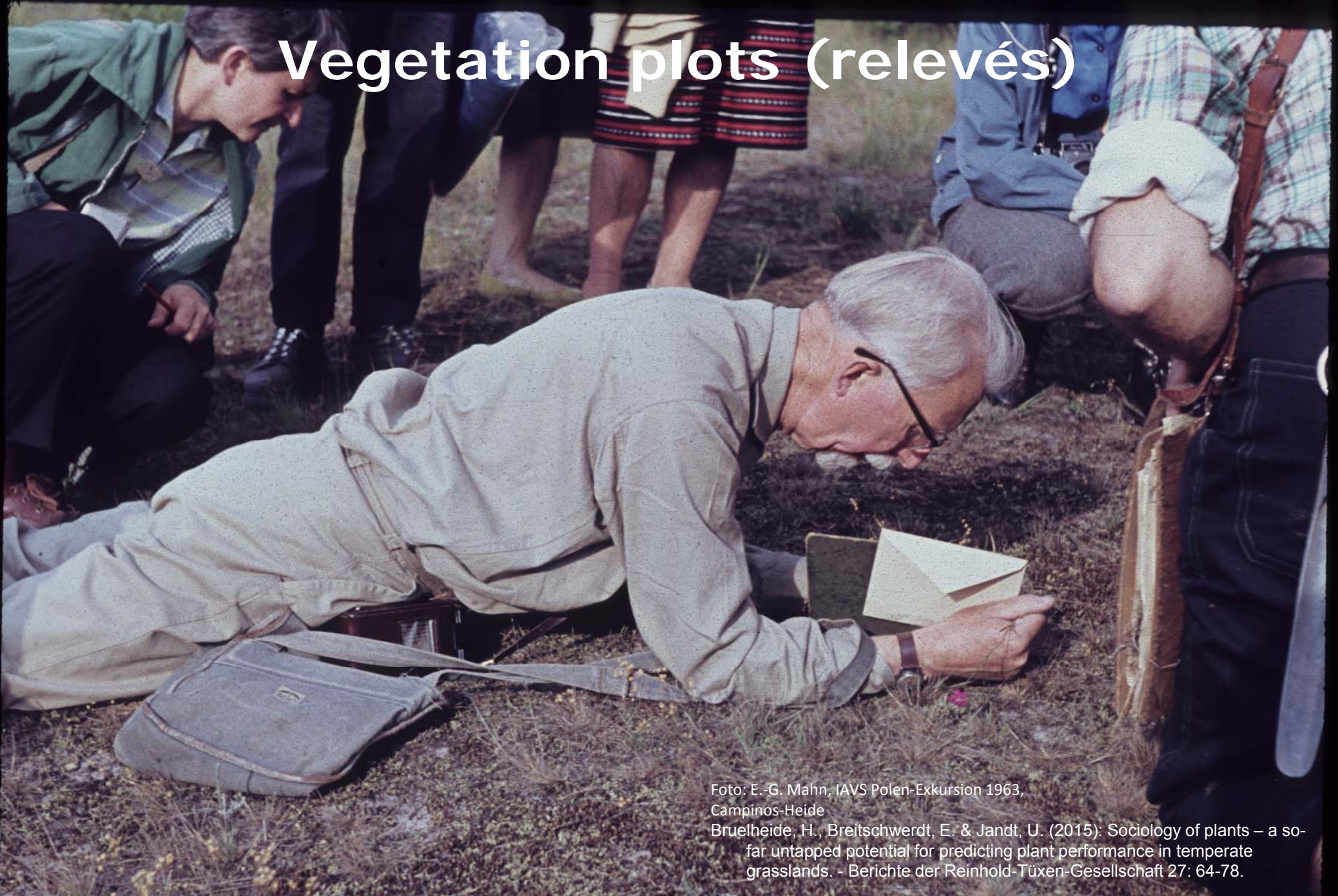


Foto: E.-G. Mahn, IAVS Polen-Exkursion 1963,
Campinos-Heide

Bruehlheide, H., Breitschwerdt, E. & Jandt, U. (2015): Sociology of plants – a so-far untapped potential for predicting plant performance in temperate grasslands. - Berichte der Reinhold-Tüxen-Gesellschaft 27: 64-78.

Information content of relevés

- **Occurrence**- information
 - > species distribution (SDMs)
- **Biodiversity** information
 - > richness per unit area, α diversity
- **Abundance** information
 - > weighting species for ecosystem functioning
 - > community weighted mean of trait values (CWM)
 - > functional diversity (FD)
 - > community trait – environment relationships
- **Co-occurrence** information
 - > species interactions

Aims of sPlot

analysis of plant
community trait -
environment
relationships

across the world's
biomes

on the basis of
vegetation plot data.



sPlot consortium

Team of experts in:

➤ Data analysis and synthesis

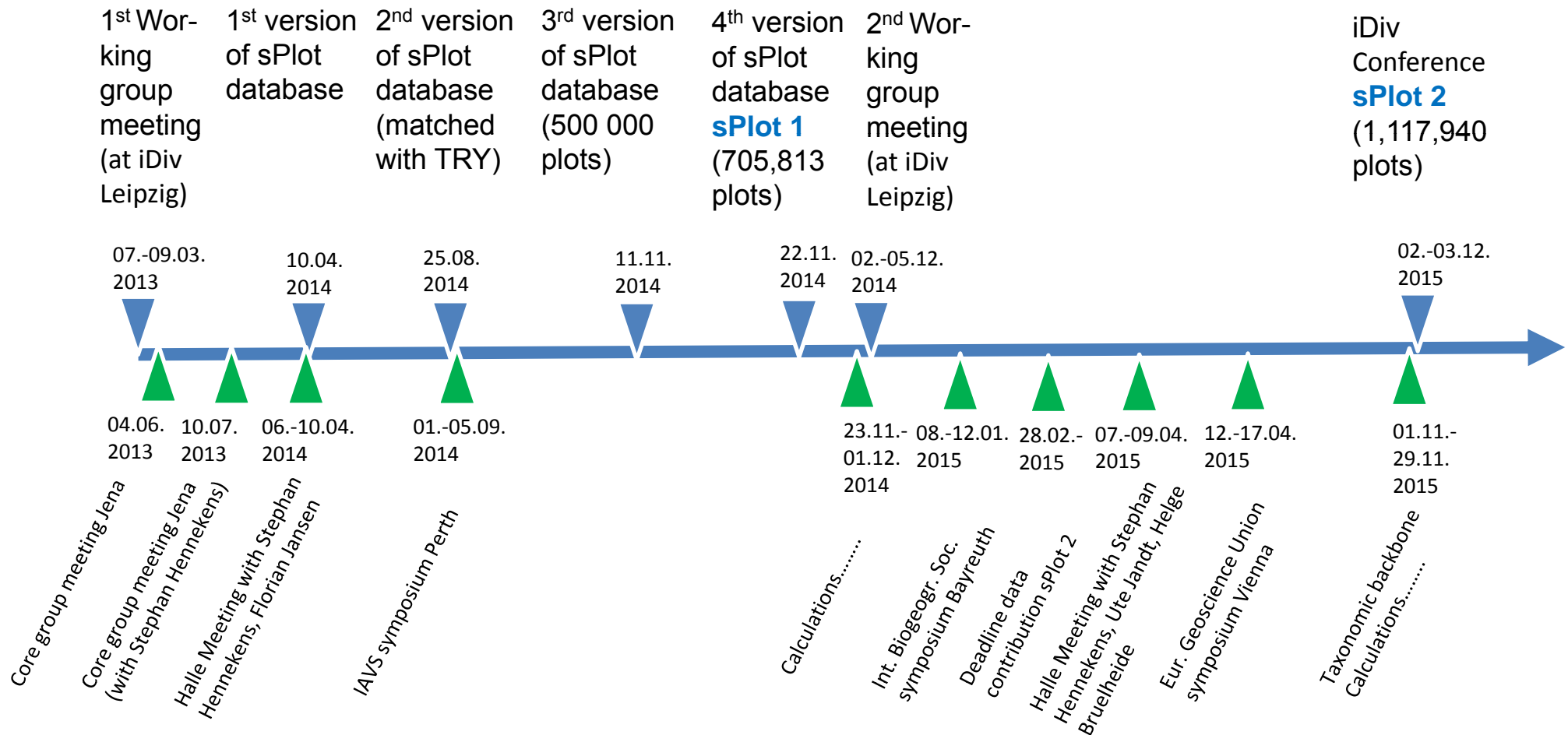
➤ Theory

➤ Vegetation plot/trait databases

sPlot Consortium members (191, as of 01 December 2015):

S. Ačić, A. Acosta, E. Agrillo, M. Alvarez, D. Ambarli, P. Angelini, I. Apostolova, M. Arfin Khan, F. Attorre, I. Aubin, C. Berg, Y. Bergeron, E. Bergmeier, P. Birnbaum, I. Biurrun, A. Bjorkman, P. Borchardt, B. Boyle, A. Breen, [H. Bruelheide](#), M.R. Cabido, A. Carni, L. Casella, L. Cayuela, T. Černý, J. Chase, V. Chepinoga, [M. Chytrý](#), J. Csiky, M. Curran, R. Ćušterevska, Z. Dajić Stevanović, F. Daniels, E. De Bie, A. de Gasper, L. De Grandpré, [V.D. Pillar](#), M. De Sanctis, [J. Dengler](#), P. Dimopoulos, D. Dubyna, R. Ejrnæs, S. Elmendorf, M.A.E.-R.M. El-Sheikh, B. Enquist, J. Ewald, G. Fanelli, R. Field, M. Finckh, X. Font, I. García-Mijangos, V. Golub, A. Gutierrez, S. Haider, S. Harpole, M.Z. Hatim, [S. Hennekens](#), S. Herzog, T. Hickler, N. Hölzel, J. Homeier, C. Hsie, A. Indreica, D. Işık, [U. Jandt](#), [F. Jansen](#), J. Janssen, B. Jedrzejek, A. Jentsch, [B. Jiménez-Alfaro](#), M. Jiroušek, J. Joswig, N. Jürgens, Z. Kaçki, [J. Kattge](#), A. Kavgaci, E. Kearsley, M. Kessler, M. Kleikamp, M. Kleyer, S. Klotz, T. Knight, I. Knollová, V. Kolomiychuk, A. Koroluk, D. Krstonošić, H. Köhl, I. Kühn, A. Kuzemko, F. Landucci, F. Landucci, M. Lee, [J. Lenoir](#), J. Leps, C.F. Li, Y. Lin, H. Liu, G. Lopez-Gonzalez, T. Lysenko, P. Mahdavi, M.D. Mahecha, C. Marcenò, A. Marticorena, V. Martynenko, W. Mathar, C. Messier, D. Michalcová, V. Minden, J.E. Moeslund, G. Muche, J. Müller, J. Munzinger, M. Nobis, J. Noroozi, V. Novotny, A. Nowak, S. Nowak, V. Onyshchenko, G. Overbeck, A. Pauchard, H. Pedashenko, R. Peet, A. Pérez Haase, T. Peterka, P. Petrik, G. Peyre, O. Phillips, V. Prokhorov, [O. Purschke](#), V. Rasomavicius, R. Revermann, J. Rodwell, T. Rogova, C. Römermann, E. Ruprecht, S. Rusina, C. Samimi, [B. Sandel](#), J. Schaminée, S. Scheiter, U. Schickhoff, M. Schmidt, F. Schrod, P. Shirokikh, J. Šibík, U. Silc, Z. Skvorc, A. Smyth, T.K. Sop, D. Sopotlieva, F. Spada, T. Spribille, Z. Stančić, K. Suzuki, J. Svenning, G. Swacha, N. Swenson, O. Tackenberg, Z. Tang, I. Tsiripidis, P. Turtureanu, E. Ugurlu, D. Uogintas, M. Valachovič, P. van Bodegom, K.A. Vanselow, Y. Vashenyak, K. Vassilev, E. Vélez-Martin, R. Venanzoni, H. Verbeeck, A.C. Vibrans, C. Violle, R. Virtanen, H. von Wehrden, V. Wagner, C. Walker, D. Walker, D. Wana, C. Webb, G. Weiblen, E. Welk, K. Wesche, W. Willner, [M. Winter](#), C. Wirth, S. Wisser, T. Wohlgemuth, S. Yamalov, F. Zhao, G. Zizka

sPlot Timeline



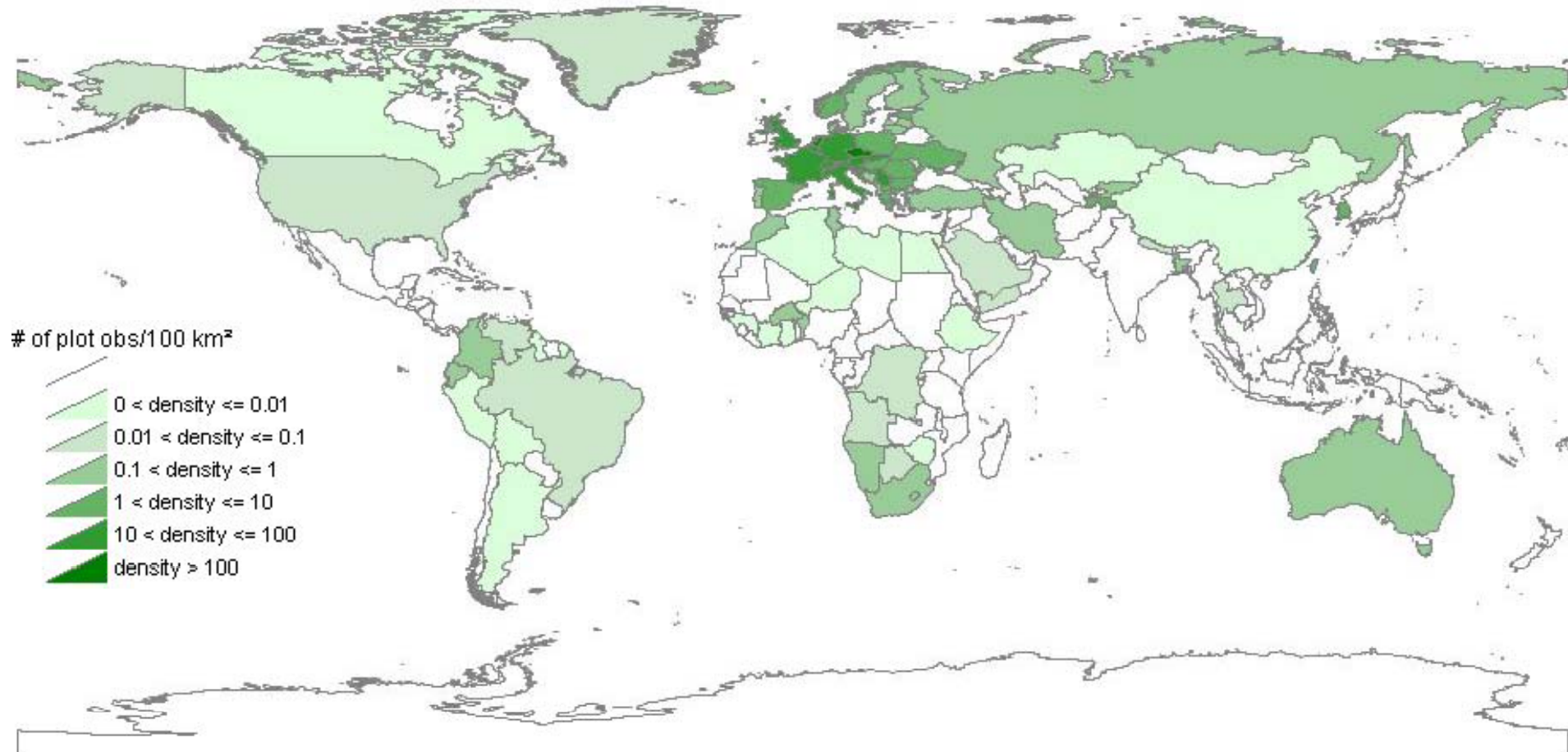
2nd working group meeting Dec. 2014



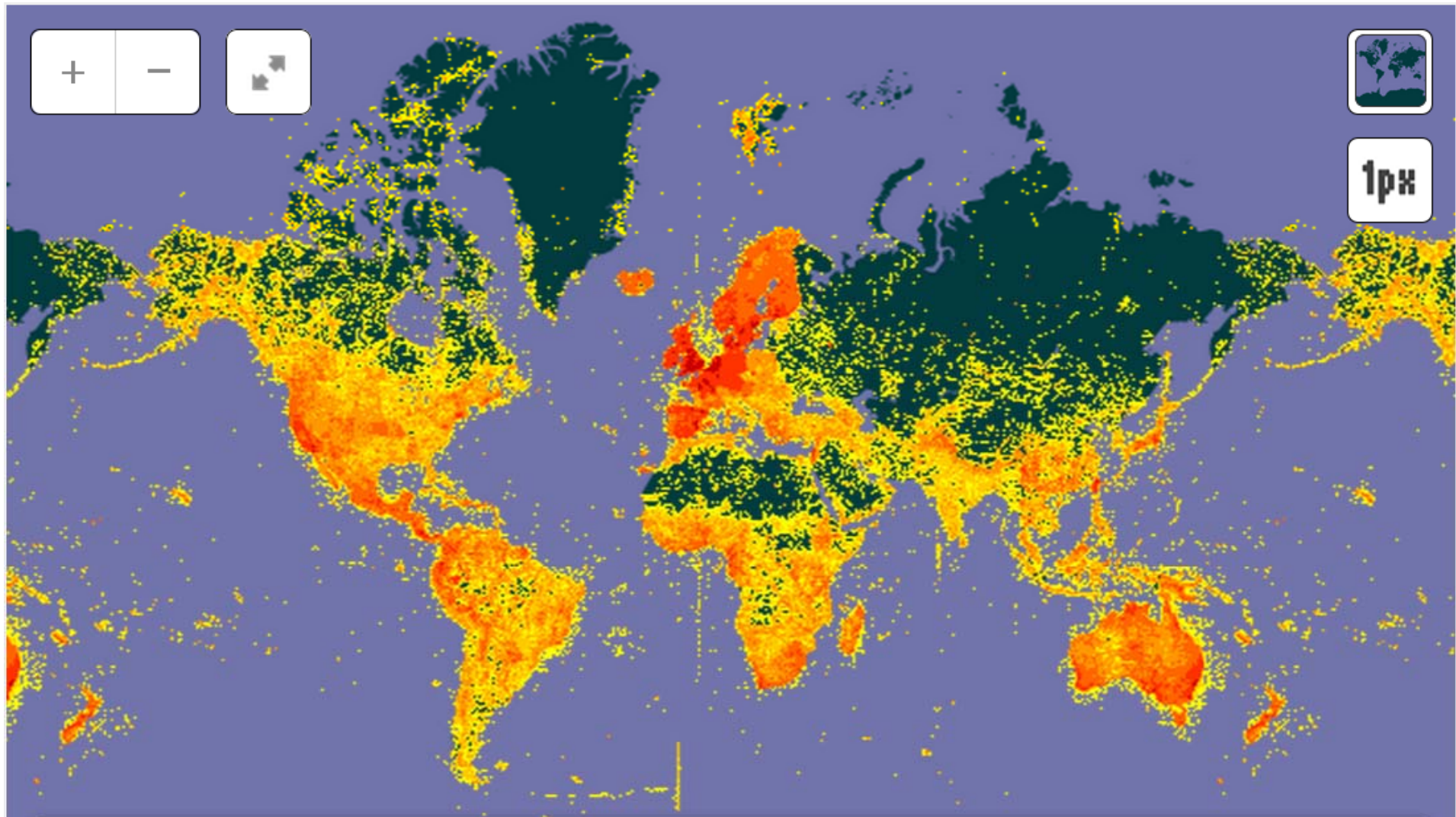


sPlot 2 Global coverage

1,117,940 plots



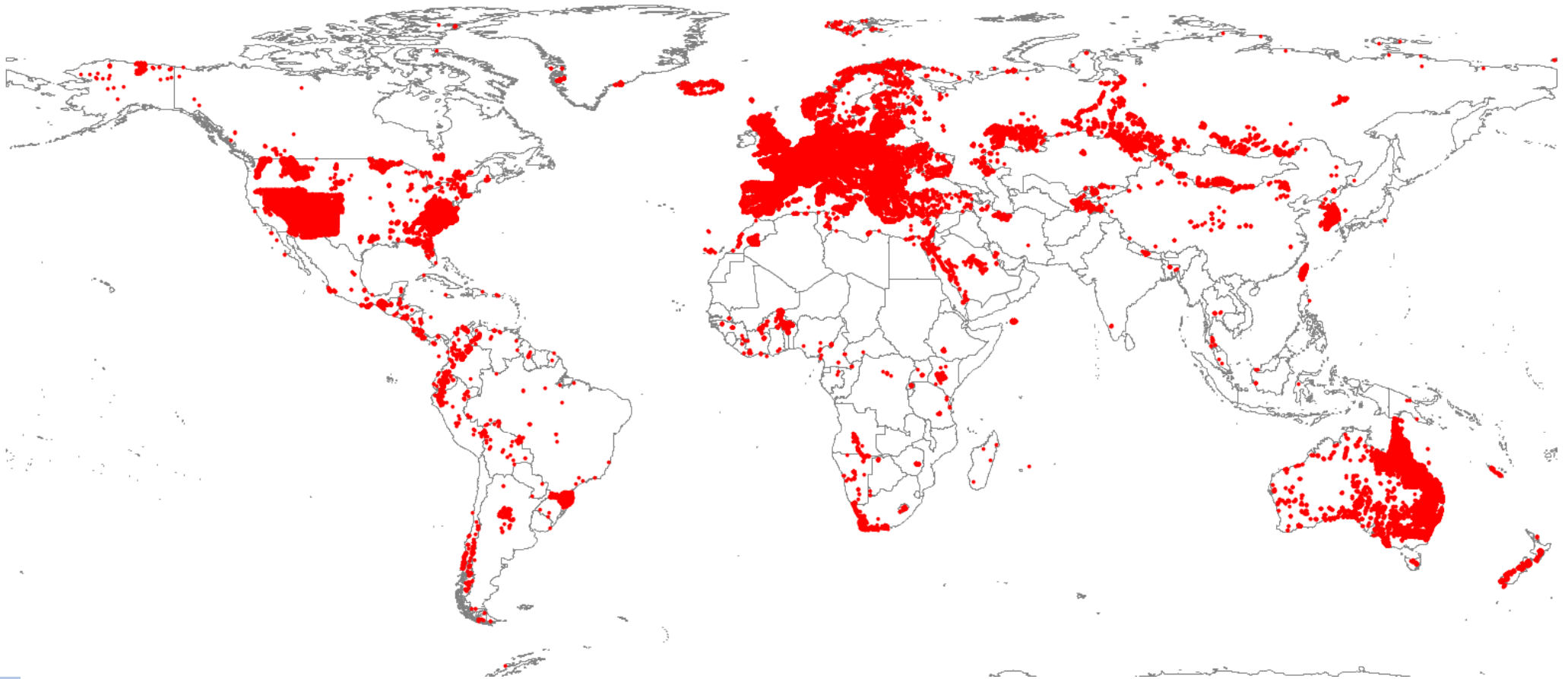
GBIF 127,398,958 records of Higher Plants



<http://www.gbif.org/>, accessed 04.05.2015, search terms: "Magnoliophyta", "Pinophyta", "Ginkgophyta", "Equisetophyta", "Lycopodiophyta"

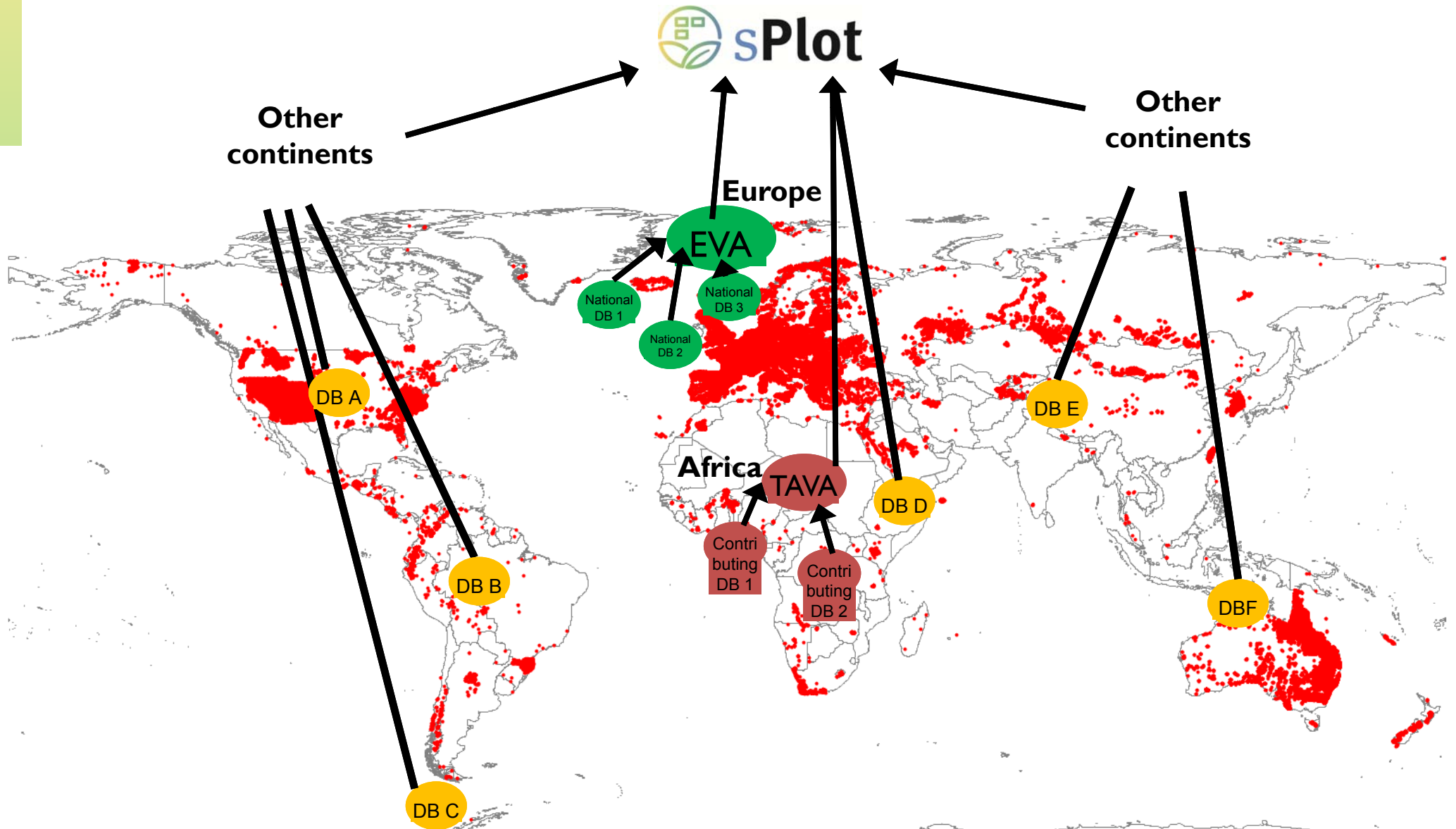
sPlot 2

24,235,008 records (=19% of GBIF)





sPlot 2 data integration



The taxonomic backbone

Turboveg 3

- Import of all data sources in Turboveg 2 format
- Collation of all single source Turboveg 2 databases in Turboveg 3
- Multiple taxonomies (taxon matching)
- Management of meta-data (data owners, etc.)

sPlot & TRY backbone comprises **122,901** (partly non-standardized) names in sPlot 2.0 and TRY 3.0

- 62,628 unresolved names were unique to sPlot, 35,477 unique to TRY and 24,796 shared between TRY and sPlot
- **Accepted names: 95,485**; Synonyms: 20,952; Unresolved: 4,772; No suitable matches found (even after manual search): 1,692
- Taxonomic ranks: species-level: 105,818; genus-level: 13,383; family-level: 1,880
- 90,696 standardized unique names (sPlot & TRY combined) belonging to 665 families, **60,908 names in sPlot 2**

Traits from TRY 3.0

Gap-filled data through matrix factorization

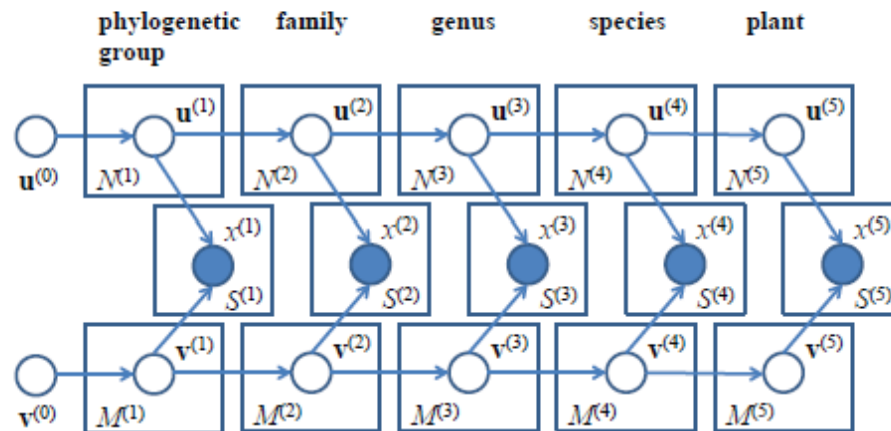


Fig. 1 from Shan, H. et al. (2012): Gap Filling in the Plant Kingdom—Trait Prediction Using Hierarchical Probabilistic Matrix Factorization Proceedings of the 29 th International Conference on Machine Learning, Edinburgh, Scotland,

Total number of species with gap-filled species in TRY: **40,790**

Of these are in sPlot **36,832 (60.47 % of all species in sPlot 2)**

18 Traits: SLA, PlantHeight, SeedMass, LDMC, StemDens, LeafArea, LeafN, LeafP, LeafNperArea, Leaffreshmass, LeafNPratio, LeafC.perdrymass, Leaf.delta.15N, Stem.cond.dens, Seed.num.rep.unit, Wood.vessel.length, Seed.length, Disp.unit.leng,

Species trait values versus community weighted mean (CWM) trait values

- Species traits value plotted against (unweighted) **mean** site variables

Or

- Community **mean** trait values plotted against (weighted or unweighted) site variables

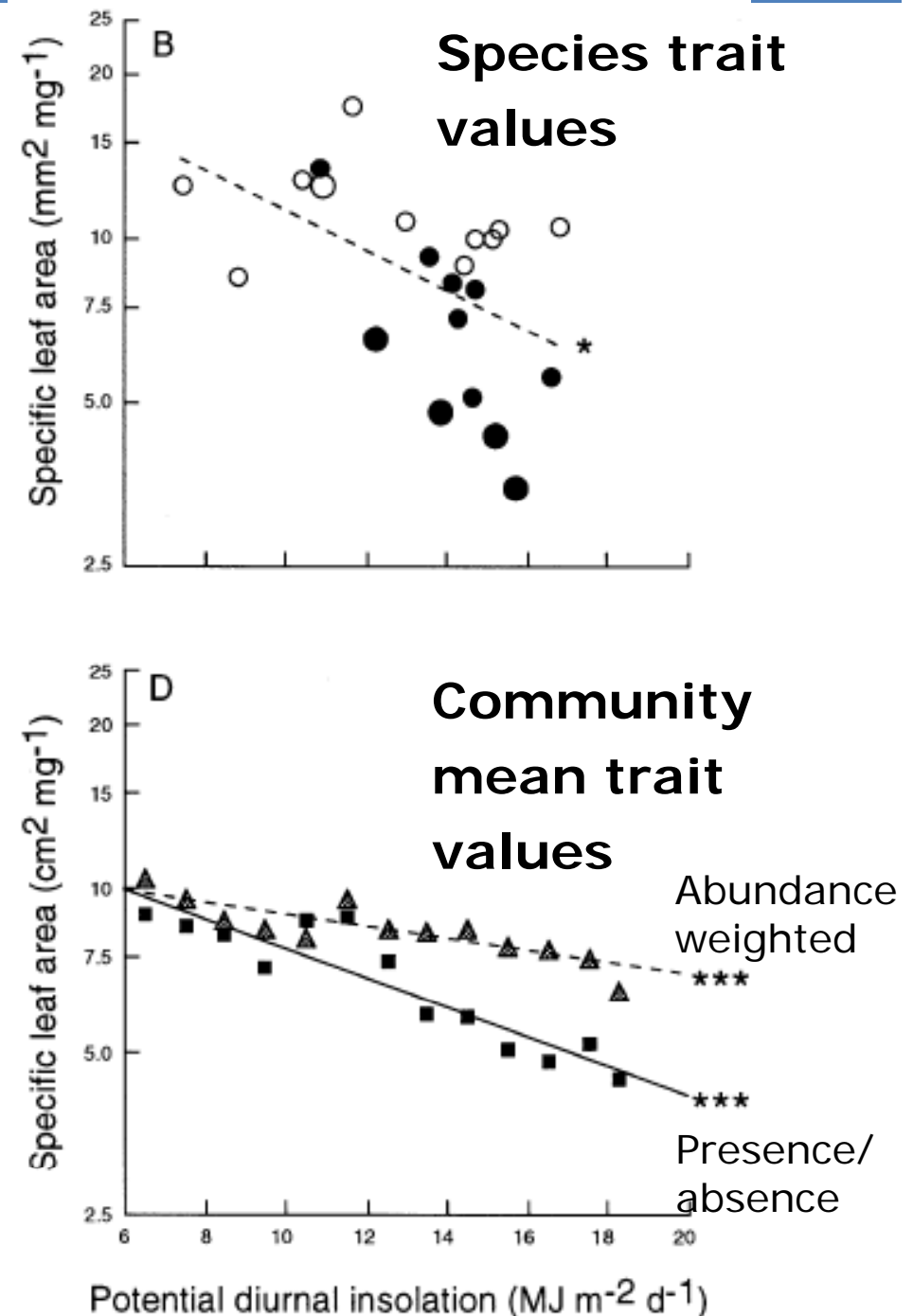
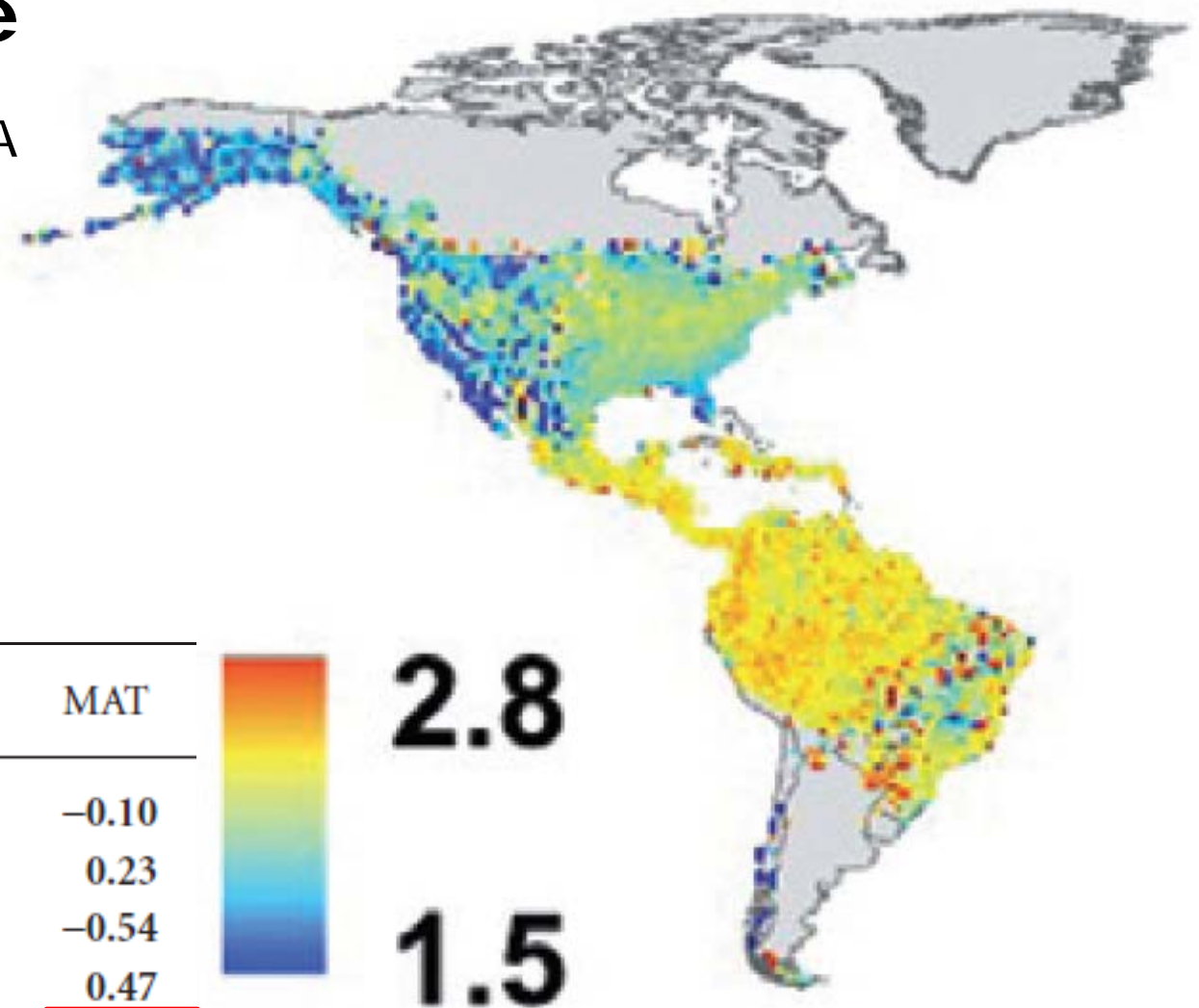


Fig. 4B, D from Ackerly et al. 2002, *Oecologia* 130: 449-457.

Species trait values (SLA) as a function of macroclimate

- Latitudinal gradient in SLA (\log_{10} transformed)
- Based on species occurrence data on 1° grid cells.

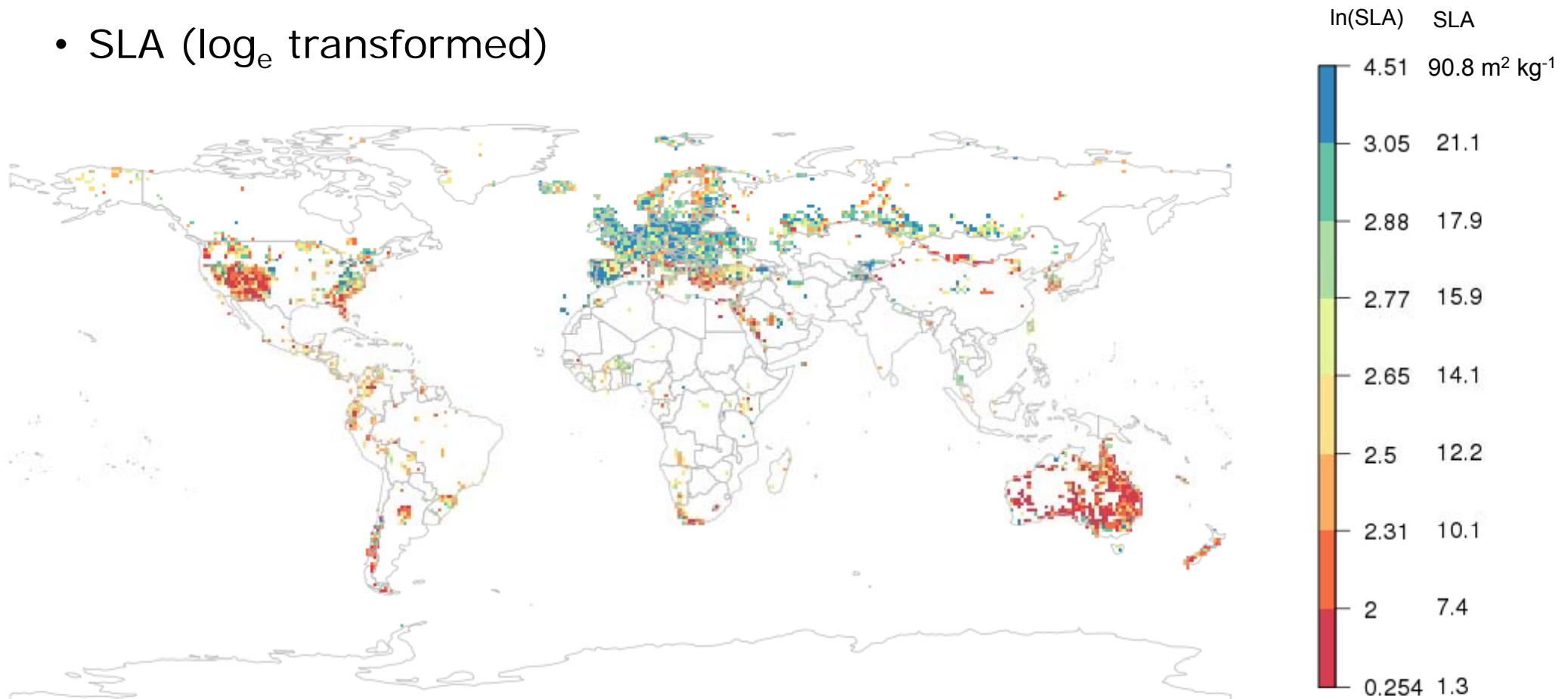


Trait	Lat	Alt	MAT
Maximum height	0.25	-0.05	-0.10
Leaf %N	-0.01	0.18	0.23
Leaf %P	0.62	0.07	-0.54
Seed mass	-0.26	-0.20	0.47
Specific leaf area	-0.48	-0.19	0.33
Wood density	-0.61	-0.24	0.62

Fig. 1 and Table 1 from Swenson et al. 2012, *Global Ecol. Biogeogr.* 21: 798-808.

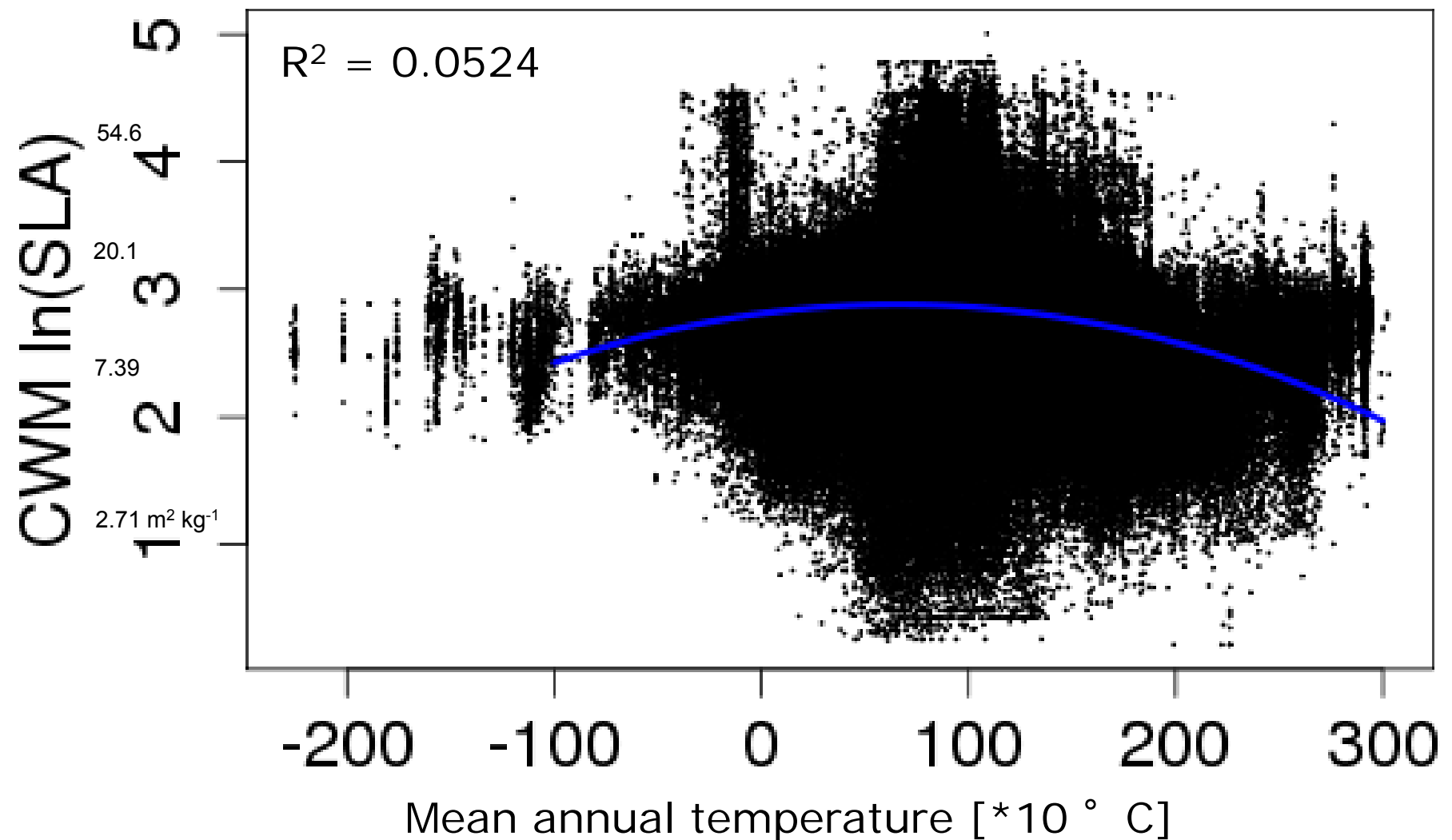
Community weighted mean trait values (CWM SLA) as a function of macroclimate

- Based on 1,111,401 plots (99.41% of all plots)
- SLA (\log_e transformed)



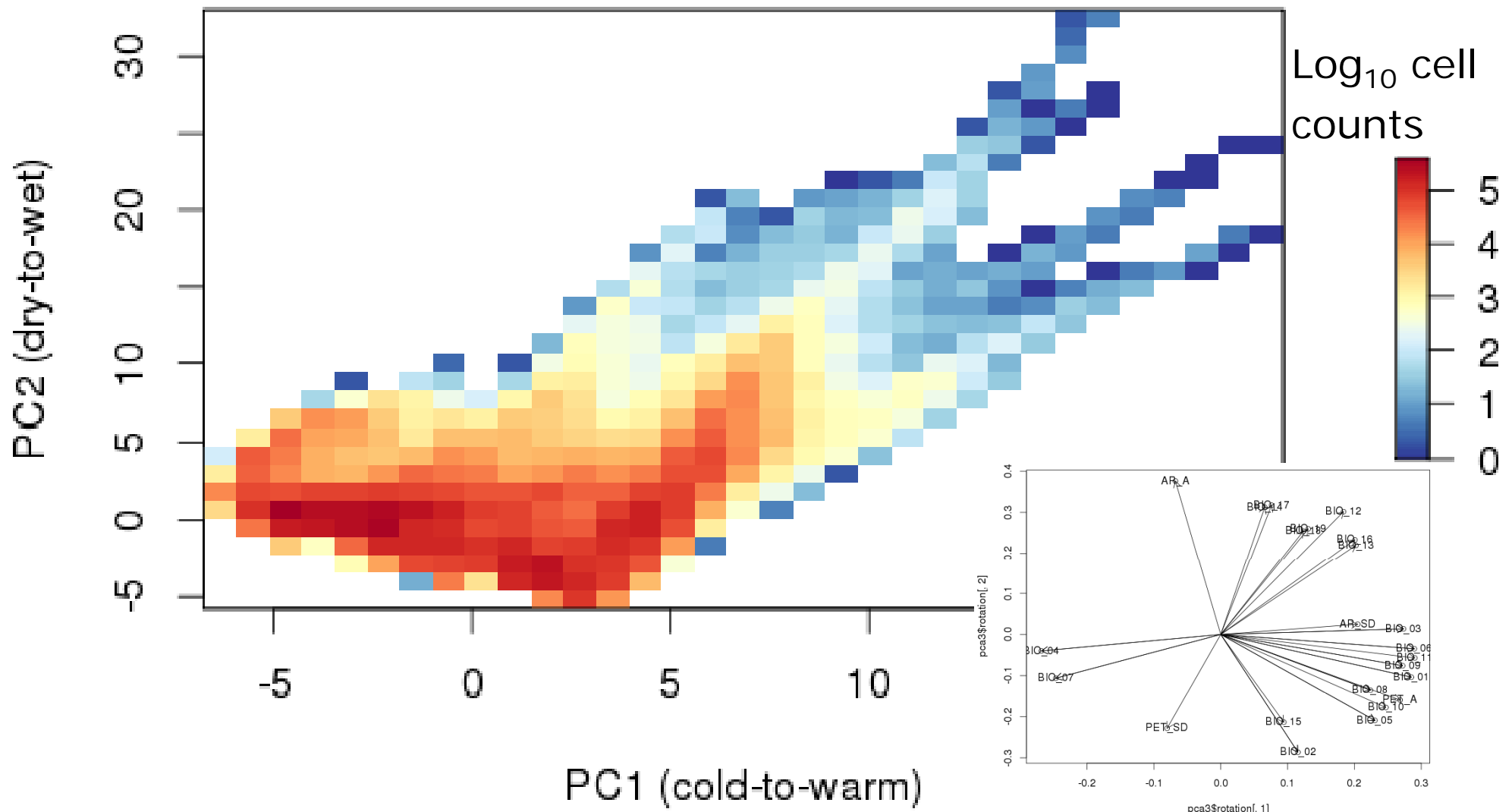
CWM SLA ~ MAT

- Based on 1,111,401 plots (99.41% of all plots)



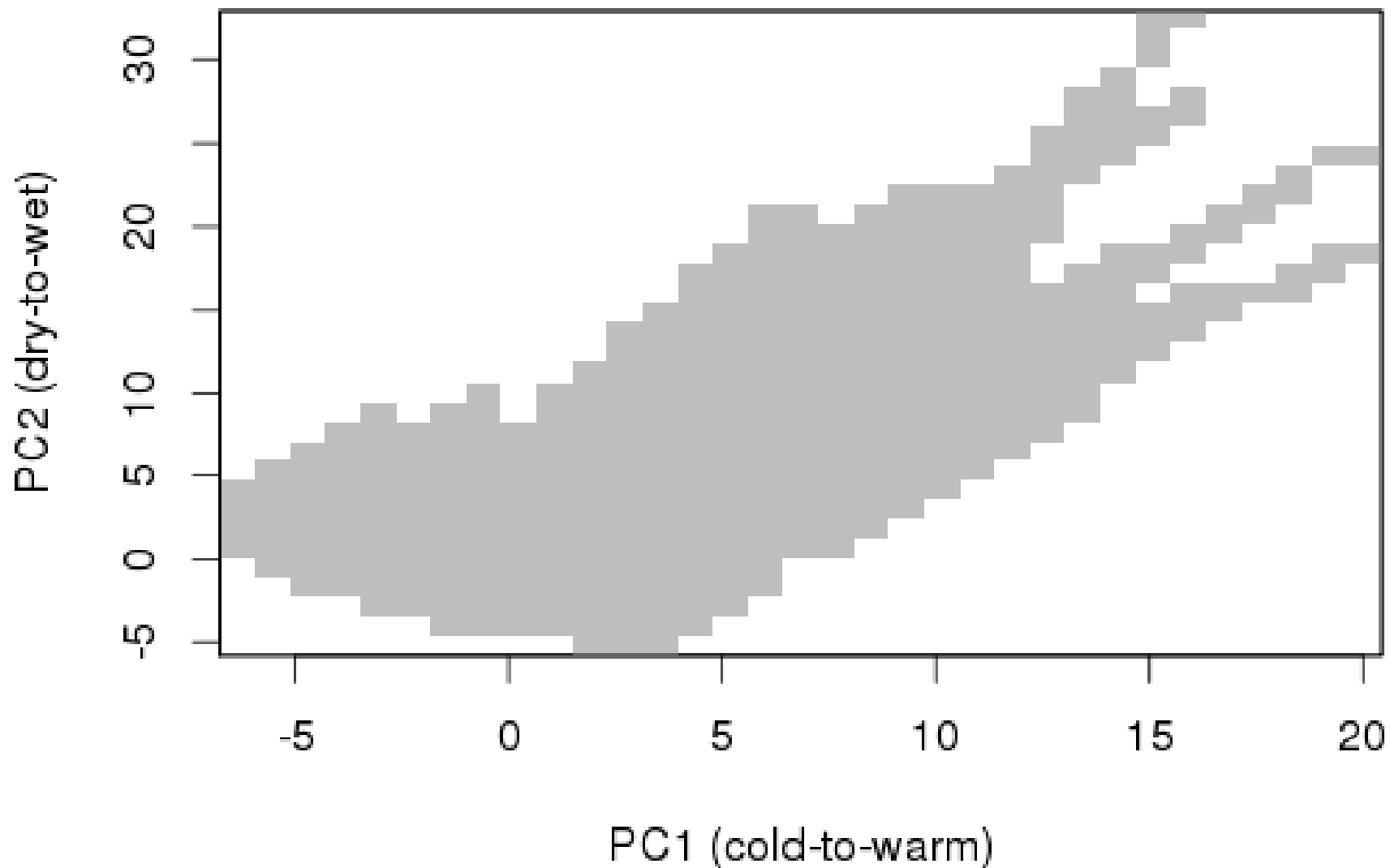
Worldwide pattern of temperature and precipitation

- Based on 9,033,453 raster cells à 2.5 arc min in Bioclim



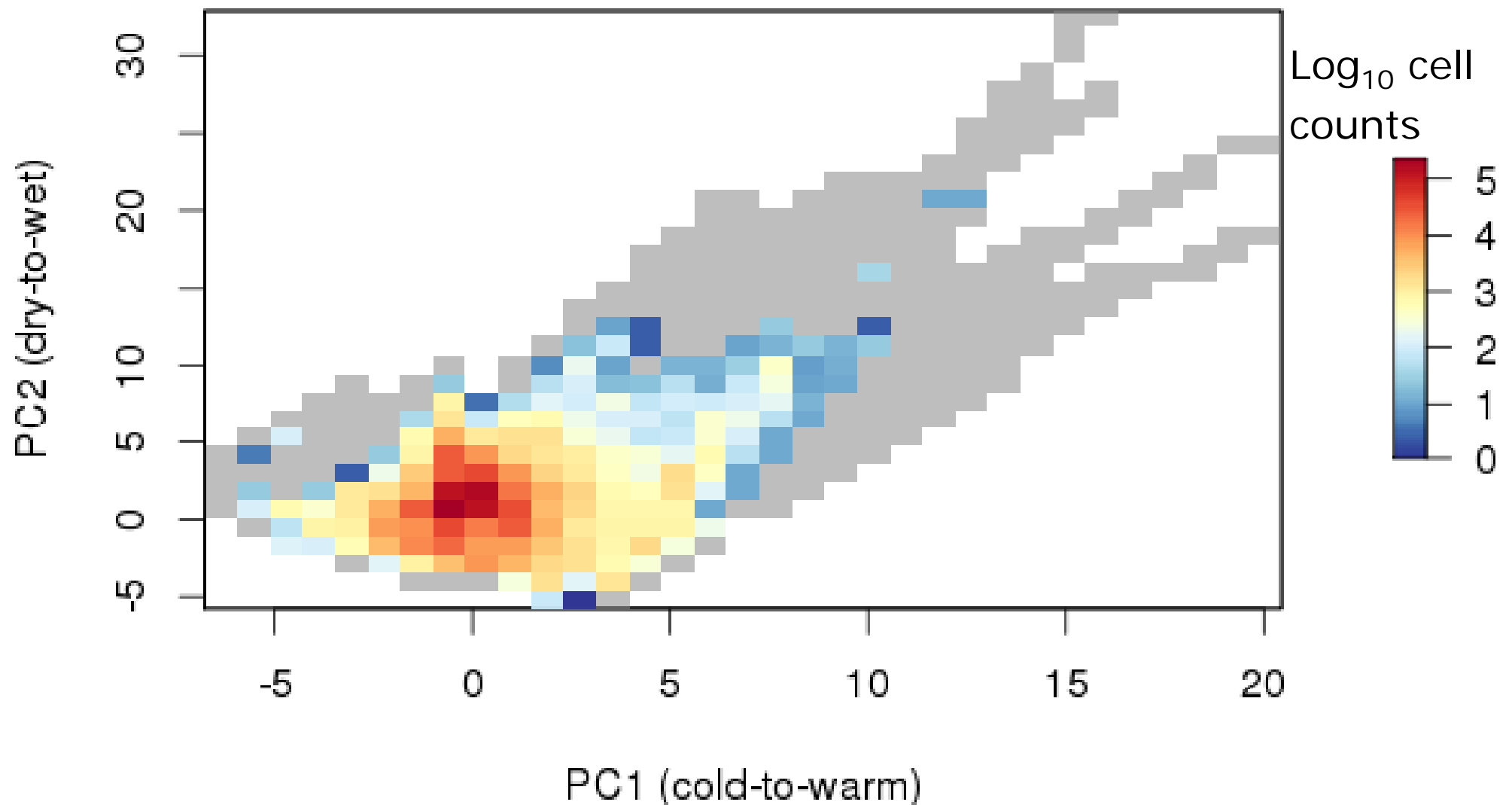
Worldwide pattern of temperature and precipitation

- Based on 9,033,453 raster cells à 2.5 arc min in Bioclim



Plots with CWM traits in temperature and precipitation space

- Based on 1,111,401 plots (99.41% of all plots)



Next steps

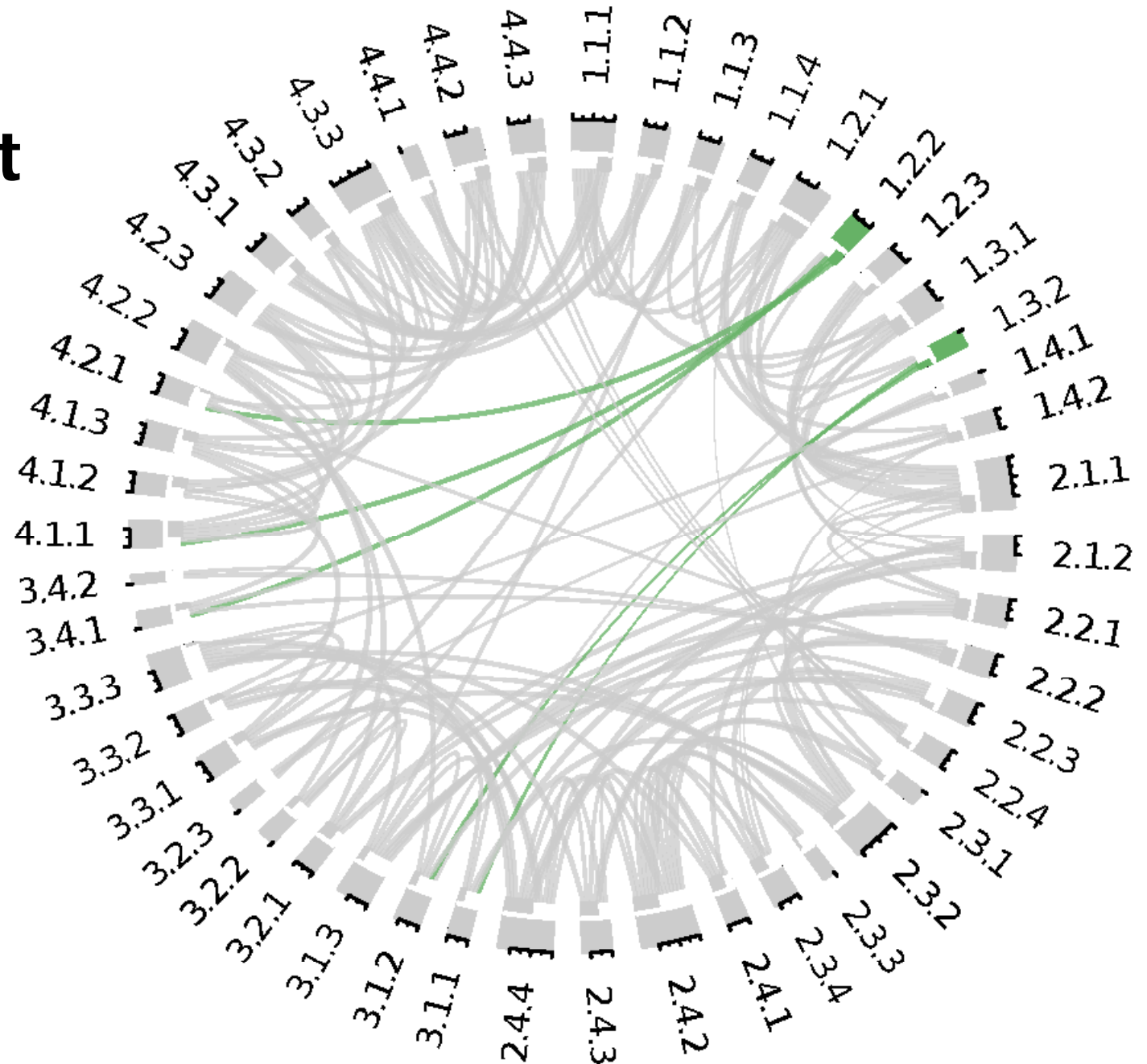
Paper projects

1. Database paper
2. Resampling strategy
3. Basic pattern paper, CWM, FD ~ climate, GDD, soil, fire,
4. Climatic variability, including multiple time scale, CWM, FD,
PD
5. EF (productivity, ...) ~ CWM, FD, PD
6. Invasive/alien species
7. Link to animal databases
8. Diversity ~ area relationship

sPlot 3.0

- Call in 12 to 18 months
- Focus on large databases in under-represented regions
- Focus on grasslands and forests

sPlot as a core dataset in iDiv 2.0



Acknowledgements

DFG

sDiv crew (sMarten Winter)

Stephan Hennekens (ALTERRA, Wageningen)

Gunnar Seidler (Bioclim, GVRD)