

City of Leipzig

Area **29,760 km²**
 Population **624,689**
 Students **39,483**



in
 2022 sDiv
 compensated for
 284t CO₂ participant
 travels with „Klima
 ohne Grenzen“

Closest airports

- ✈ **Berlin (BER)**
train, every 60 min
- ✈ **Frankfurt/Main (FRA)**
train, every 60 min
- ✈ **Munich (MUC)**
train, every 60 min

Travel times

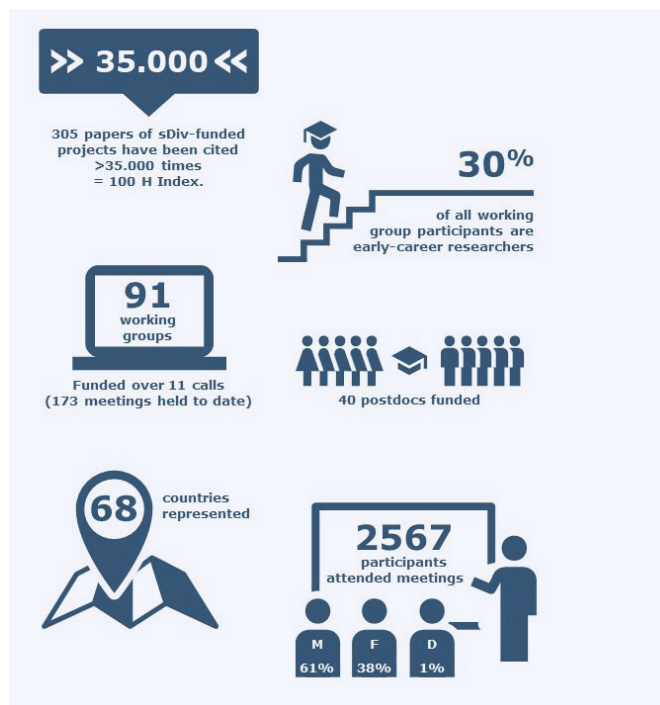
	Car	Train
Berlin	2.0 h	1.0 h
Hamburg	4.0 h	3.0 h
Frankfurt	4.0 h	3.5 h
Munich	4.5 h	3.5 h

Leipzig

iDiv is situated in Leipzig in the heart of Europe. Leipzig is a city known as Venice of the North, rich in culture, music and commerce. At the centre of many historic events – from the 1813 Battle of the Nations to the peaceful German revolution in 1989 – Leipzig embraces tradition alongside zeitgeist. Enjoy exploring this vibrant, fast-growing and very “green” city.



sDiv in a nutshell



sDiv calls

For more and detailed information about current sDiv calls please visit:
www.idiv.de/sdiv/calls



Contact

Dr Marten Winter
 Head of Synthesis Centre (sDiv)
 Puschstraße 4, 04103 Leipzig, Germany
 Phone: +49 341 97-33157
 Mail: sDiv@idiv.de
www.idiv.de/sdiv



undetermined Asian mantis species, National Botanical Garden, Dhaka, Bangladesh
 Photo by Shawan Chowdhury

sDiv | synthesis centre
 of iDiv

Our mission

sDiv, iDiv's synthesis centre, provides global leadership on synthesizing knowledge of biodiversity change, its underlying processes and consequences for the functioning of ecosystems. We want to understand the complexity of ecological processes and to design effective actions to protect and sustain our natural world.

Our aims

- Foster biodiversity synthesis and theory in a data-rich world
- Integrate the national and international scientific community
- Promote young scientists
- Produce relevant and high-impact outcomes

Our funding mechanisms

Each year, sDiv funds 15 to 25 working group meetings. Working groups are established for a period of two to three years with a minimum of two meetings during this time.

Early career working groups

These smaller working groups (max 10 participants) of early-career researchers (ECRs) are lead and driven by ECRs including max two senior researchers to minimize potential power-relationships.

Flexible synthesis projects

Here we support the typical working groups (three meetings, 12-20 participants) but also offer a diverse set of additional modules to be combined flexibly. These modules can include short-term guest visits (in iDiv or at collaborator work place), small project meetings or the support with the help of scientific assistants (work place in Leipzig).

Synthesis postdocs

sDiv supports two different kind of postdocs over the course of two to three years: **Working group postdocs** support the working group analyses and outcomes. **Individual postdoc fellows** conduct their own synthesis project in a stimulating and supportive international environment at sDiv.



Participants of the sREplot working group

Collaborations

International Joint Synthesis Consortium

Further, sDiv is a member of the informal International Joint Synthesis Consortium (IJSC, www.synthesis-consortium.org) and has ongoing collaborations and calls with several existing synthesis centres (e.g. CESAB (F), CIEE (CA), Sinbiosis (BRA), AquaSYNC (DK)). Currently, sDiv supports the setting up of a new Synthesis Centre associated with University of Cape Town

"I love the sDiv working groups, I feel like everything is well taken care of to make sure we're as productive as possible without having to worry about anything."

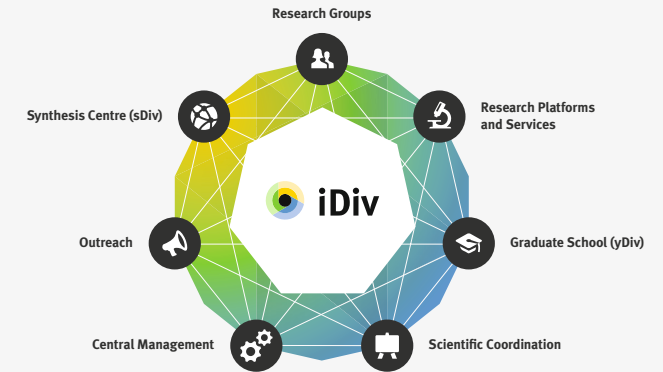
participant of the sDiv working group sMars

"sDiv has produced the biggest possible splash. Everyone is traveling to Leipzig these days."

Prof Paul Leadley
Scientific Advisory Board member
(Université Paris-Sud)

"People are proud to be invited to that famous German centre for biodiversity."

Prof Luc de Meester
sDiv working group participant
(KU Leuven)



About iDiv

How is life distributed on planet Earth? How fast do species extinct? What consequences does the loss of biodiversity have for the functioning of ecosystems? These are three of many questions to which the German Centre for Integrative Biodiversity Research (iDiv) is dedicated.

iDiv is a DFG (Deutsche Forschungsgemeinschaft) research centre with more than 450 employees. It is jointly funded by Martin Luther University of Halle-Wittenberg, Friedrich Schiller University Jena and is operated in cooperation with the Helmholtz Centre for Environmental Research – UFZ. Here, researchers from 40 nations establish the scientific basis for the sustainable management of our planet's biodiversity. Beyond its core centre, iDiv is a network of 11 partner institutions with more than 180 elected researchers, forming together with its employees a unique network of biodiversity related experts.

iDiv offers for its science community access to one of the highest densities of experimental research platforms (e.g. iDiv Ecotron, The Jena Experiment, EcoMetEoR – Ecometabolomics Lab) and global data collections (e.g. TRY plant traits, EuropaBON, sPlot, Earth System Data Lab).

In the ten years since its foundation, iDiv has gained great international recognition and became a world leading centre for biodiversity research and related science-policy activities.

